



Leafy Spurge Beetle Collection at Willner-Elbow Community Pasture

What you will be doing

Last year, after a decade of releases, Willner-Elbow community pasture confirmed a self-sustaining population of leafy spurge beetles. The primary goal for this event is to facilitate the spread of this leafy spurge-eating beetle by collecting them from areas where they are plentiful to areas in the pasture that need a bit more help controlling leafy spurge.

Why you will love it

This is a real-world treasure hunt! These efforts will help land managers continue to control the invasive leafy spurge.

About the pasture

Located southeast of the town of Elbow and directly east of the Douglas Provincial park, the Elbow pasture is 9,308 hectares of sand dunes, grassland, shrub land and aspen groves.



Event details

Date: 9:30 a.m. to 3:30 p.m.
on July 9, 2022

Location: Willner-Elbow
Community Pasture

Meeting details:

Please refer to the driving directions map and detailed information below.

GPS Coordinates:
51.07281, -106.4107

Reminder! Zoom webinar on Thursday, July 7 at 6:30 p.m. to learn about survey protocol. This webinar is not mandatory and will be recorded and sent out immediately afterwards.

<https://natureconservancy-ca.zoom.us/j/86578437079>

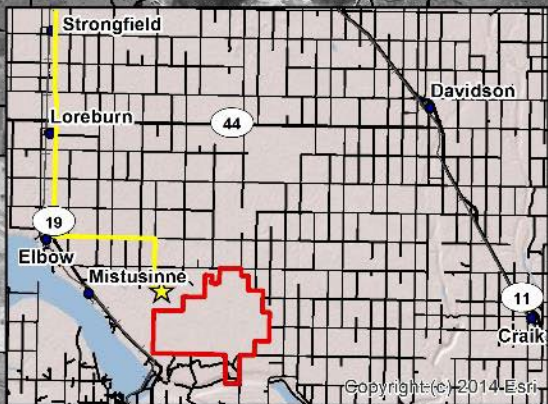
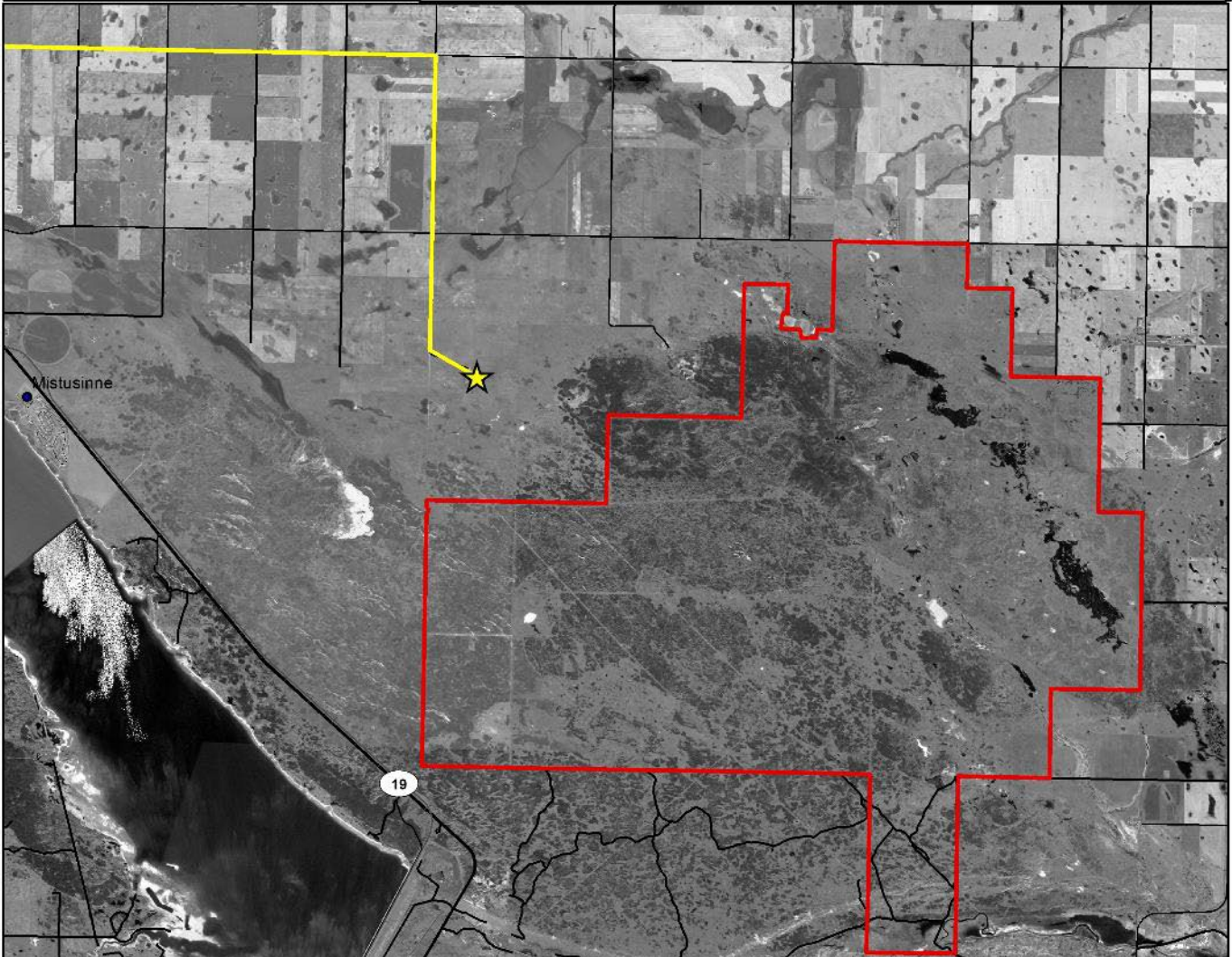
Directions from Saskatoon:

1. Drive south on Hwy 11
2. Turn west (right) at Kenaston onto Hwy 15
3. Drive for ~23 km then turn south (left) onto Hwy 19
4. Continue south for 42 km until Elbow
5. Turn east (left) at grid 749 and continue for ~11 km
6. Turn south (right) and continue for ~6.5 km into the farmyard

Lat/Long: 51.07281, -106.4107
 Travel Time: 1 hr 50 min

Disclaimer:
 This map is illustrative only. Do not rely on it as being a precise indicator of privately-owned land, routes, locations of features, nor as a guide to navigation.
 This map may contain omissions or errors.
 SPOT2.5m Panchromatic Imagery © 2011 CNES, Licensed by Iunctus Geomatics Corp., Lethbridge, Alberta, Canada
 Date of Imagery: 2006
 60cm Orthorectified Aerial Imagery Imagery © 2011 Saskatchewan Geospatial Imagery Collaborative, Saskatoon, Saskatchewan, Canada
 Date of Imagery: 2010
 Projection: NAD83 UTM Zone 13N
 © The Nature Conservancy of Canada
 21 May 2021

Elbow Pasture Driving Directions



Legend

-  Settlements
-  Elbow Pasture Meeting Point
-  Highway
-  Elbow Pasture Boundary
-  Driving Directions from Saskatoon

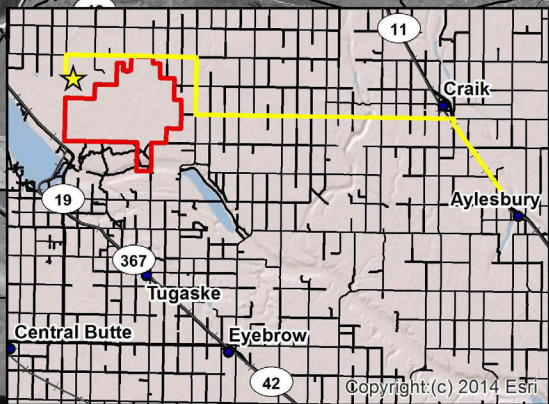
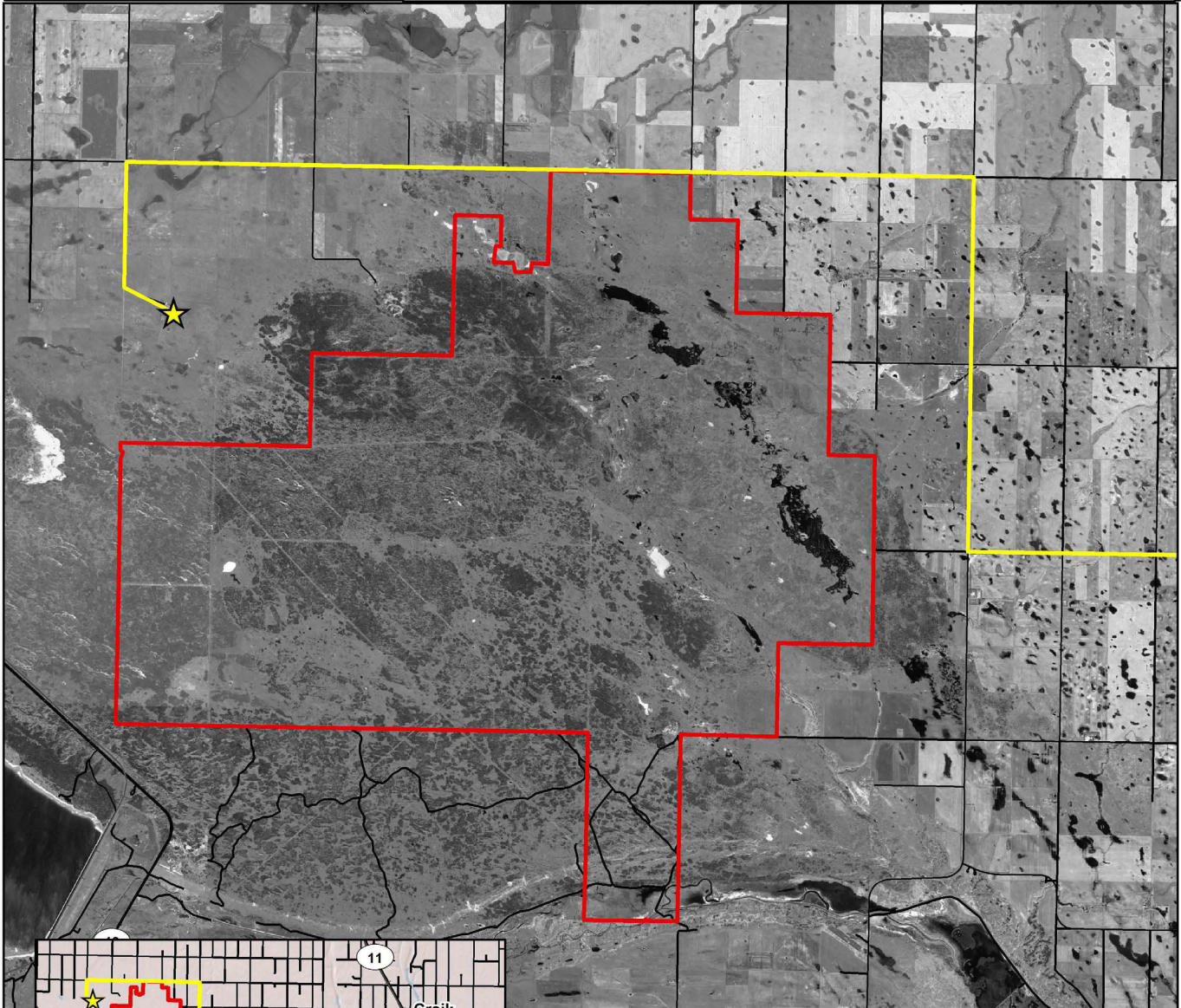
Directions from Regina:

1. Drive north on Hwy 11 towards Lumsden
2. Continue on Hwy 11 towards Craik
3. Just before Craik, turn west (left) on SK-732 W (~29 km)
4. Turn north (right) on SK-627 N (~6.5 km)
5. Turn west (left) on grid road after ~6.5 km. Follow this road for ~14.6 km
6. Turn south (left) and continue for ~3.1 km into the farmyard

Lat/Long: 51.07281, -106.4107
Travel Time: 2 hrs

Disclaimer:
This map is illustrative only. Do not rely on it as being a precise indicator of privately-owned land, routes, locations of features, nor as a guide to navigation.
This map may contain omissions or errors.
SPOT2 5m Panchromatic.
Imagery © 2011 CNES. Licensed by Iunctus Geomatics Corp., Lethbridge, Alberta, Canada
Date of Imagery: 2006
60cm Orthorectified Aerial Imagery
Imagery © 2011 Saskatchewan Geospatial Imagery Collaborative, Saskatoon, Saskatchewan, Canada
Date of Imagery: 2010
Projection: NAD83 UTM Zone 13N
© The Nature Conservancy of Canada
27-May-2021

Elbow Pasture Driving Directions



Legend

- Settlements
- ★ Elbow Pasture Meeting Point
- Highway
- Elbow Pasture Boundary
- Driving Directions from Saskatoon



Driving directions

From Saskatoon:

1. Drive south on Hwy 11
2. Turn west (right) at Kenaston onto Hwy 15
3. Drive for 23 km then turn south (left) onto Hwy 19
4. Continue south for 42 km until Elbow
5. Turn east (left) at grid 749 and continue for 11 km
6. Turn south (right) and continue for 6.5 km into the farmyard

From Regina:

1. Drive north on Hwy 11 toward Lumsden
2. Continue on Hwy 11 toward Craik
3. Just before Craik, turn west (left) on SK-732 W (29 km)
4. Turn north (right) on SK-627 N (6.5 km)
5. Turn west (left) on grid road after 6.5 km. Follow this road for 14.6 km
6. Turn south (left) and continue for 3.1 km into the farmyard

**Need help?
Call me!**



Matthew Braun

**Manager of Conservation
Science and Planning
(306) 209-9954**

matthew.braun@NatureConservancy.ca

Cancellations

If for any reason you cannot attend this event please inform us in advance by email or phone.

Inclement weather

This event will run rain or shine, but field work will be cancelled or postponed if extreme weather conditions occur or site conditions are unsafe. If this occurs, all attempts will be made to contact you at the number you provided when you register.



Driving directions

Details to get to the Griffin family yard site:

There will be a flag on the corner of the grid road where you are to turn south off the east-west grid road. There aren't any obvious landmarks for this turn off, so look for the flag. After you turn south, you will come to a self-closing electrified gate that you need to drive through slowly (do not get out of your vehicle to move it). There will be a NCC staff person here to help with this gate.

There will be a second set of flags where you turn left into the long driveway into the Griffin family yard site. Keep driving until you see vehicles, including the white NCC trucks. From the Griffin family yard, we will shuttle people to the survey site who don't have high-clearance vehicles (to limit fire risk and avoid damage to vehicles). From there, we will shuttle people within a few 100m of the start of the survey area.

**Need help?
Call me!**



Matthew Braun
**Manager of Conservation
Science and Planning**
(306)209-9954

Matthew.Braun@NatureConservancy.ca

Cancellations

If for any reason you cannot attend this event please inform us in advance by email or phone.

Inclement weather

This event will run rain or shine, but field work will be cancelled or postponed if extreme weather conditions occur or site conditions are unsafe. If this occurs, all attempts will be made to contact you at the number you provided when you register.

Event-day schedule

Time	Activity
9:15 a.m.-9:30 a.m.	Arrive at the meeting location
9:30 a.m.-10 a.m.	Welcome, orientation and safety
10 a.m.-12 a.m.	Search for beetles!
12 p.m.-1 p.m.	Sit-down lunch
1 p.m.-3 p.m.	Finish searching and moving beetles. Walking tour if there is time.
3 p.m.	Wrap up, thank you's and "see you later's"!

Safety Notes

Sturdy, close-toed shoes are important!

We will search for beetles in rain or shine, so be prepared for the weather. Dress in warm layers so you are comfortable in a variety of temperatures.

Bring a bag lunch, plenty of water and any necessary medications.



What to bring

- Lunch and snacks
- Binoculars/camera (optional)
- Backpack or day pack
- Reusable water bottle
- Layers of clothing
- Sturdy footwear



What's provided

- Extra water
- Safety equipment (first aid kits, etc.)
- Hand sanitizer & toilet paper