

# Hazel Bird Nature Reserve

## Closest town/city

Cobourg, ON (approximately 18 kilometres)

## Contact

1-866-281-5331 ext. 23

[ontario@natureconservancy.ca](mailto:ontario@natureconservancy.ca)

## Seasons

accessible year-round



## Property description

Four seasons of exploration await at this property, which is part of the Rice Lake Plains. Don your walking shoes — or, in winter, your snowshoes — and wander your way along the main loop trail that passes through tall grass prairie, sand barren, oak woodland and black oak savannah. Take in the beautiful views of the open grasslands as well as the broader Oak Ridges Moraine landscape to the west.

Visit in spring for the returning birds and the wildflowers, or in summer for the grassland bird viewing and vistas. Fall colours in Ontario never disappoint and here you can see the subtle lavender colour of the white oak. Complete your snow-filled winter by spotting woodland wildlife tracks.

## Amenities

benches, cell service, interpretive signage, parking

## Points of interest

lookouts, old homestead, restored tall grass habitats, sand barrens

## What to bring

binoculars, bug spray, camera, closed-toe shoes, hat, long pants, sunscreen, water

## Safety alerts

poison ivy and ticks present (tuck pants into socks)

## Directions

1. From Cobourg and Highway 401, drive north on Highway 45 (Baltimore Road) for 5.4 kilometres.
2. Turn left onto Harwood Road/Regional Road 15 and drive 9.1 kilometres.
3. Turn right onto 7 Line/Beavermeadow Road East and travel two kilometres to the parking lot at 9636 Beavermeadow Road East. The property is on the north side of the road.

Before visiting any Nature Destinations property, please check [naturedestinations.ca](http://naturedestinations.ca) for the most up-to-date access information.

## Trails

### Main trail

Type: loop

Difficulty: moderate with steep sections

Round-trip distance: 4.2 kilometres

Surface: earthen

### Shortcut

Type: linear

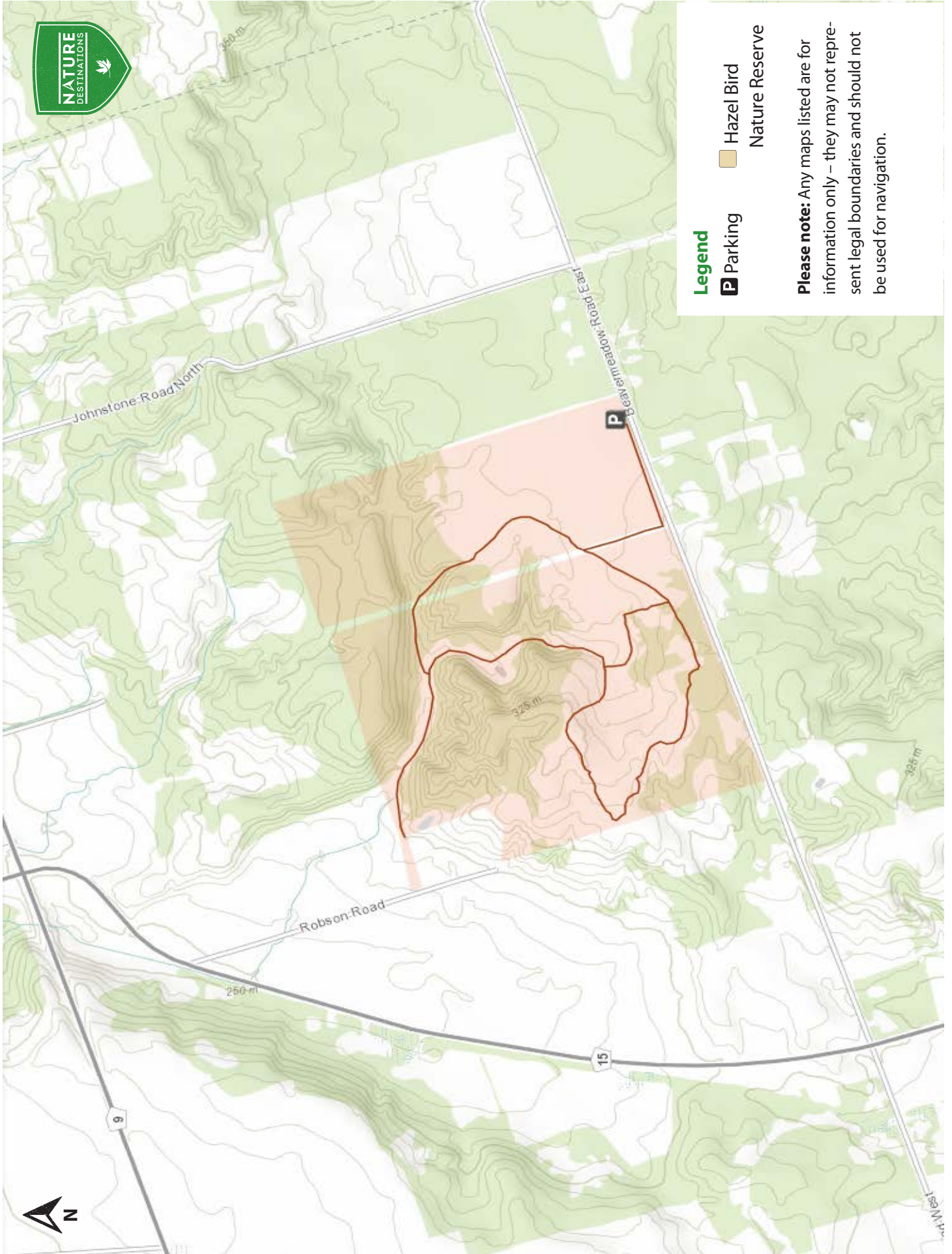
Difficulty: easy with moderate sections

Round-trip distance: 340 metres

Surface: earthen

## Species to spot

- eastern meadowlark
- grasshopper sparrow
- northern harrier
- red fox
- red-tailed hawk
- savannah sparrow
- wild turkey



**Legend**

**P** Parking

 Hazel Bird

 Nature Reserve

**Please note:** Any maps listed are for information only – they may not represent legal boundaries and should not be used for navigation.